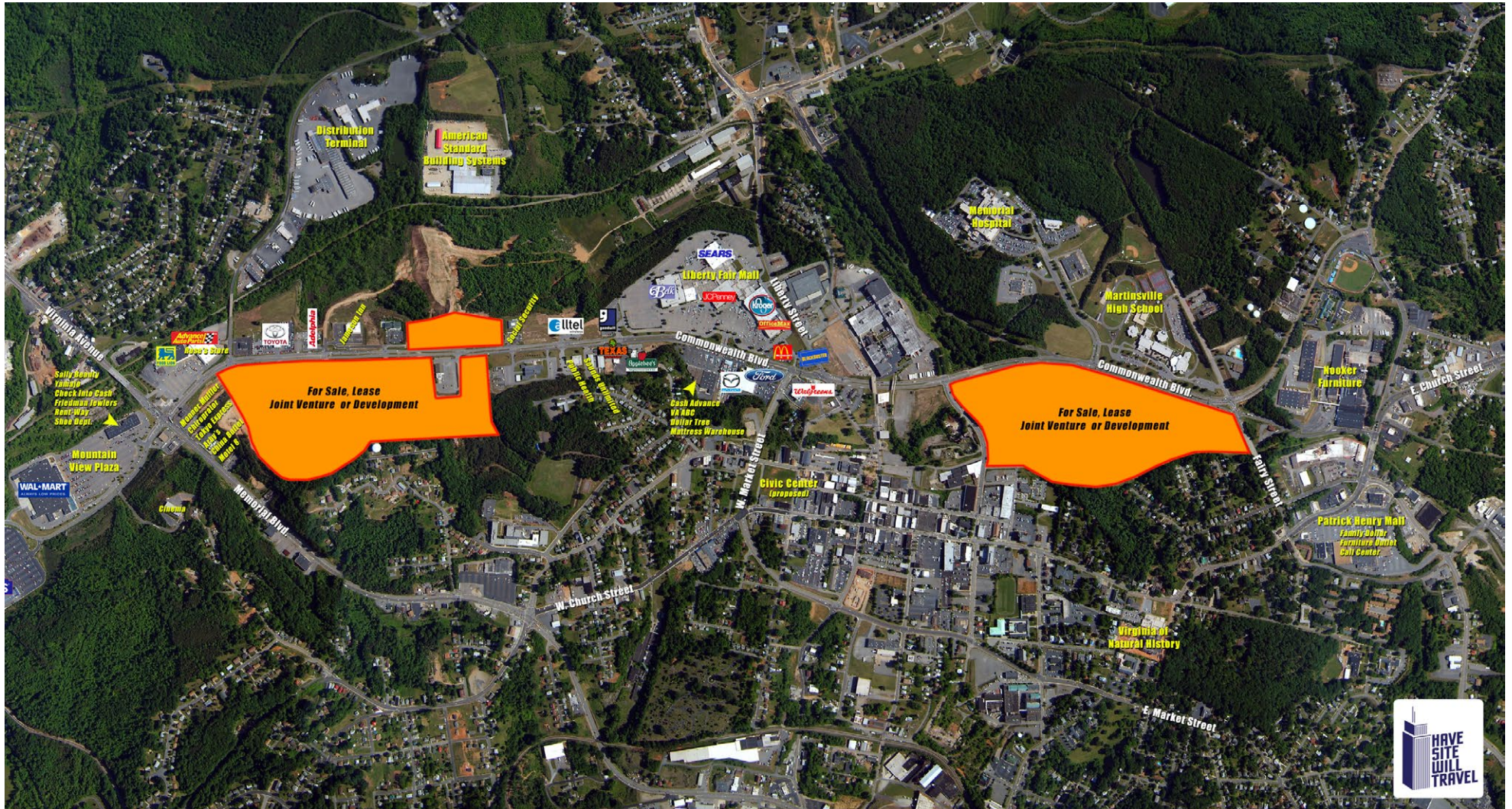


# Martinsville, VA

Land For Development, Sale, Lease or Joint Venture



## POTENTIAL USES

- Theatre
- Big Box Retail
- Restaurants
- Retailers
- Offices: Medical & Services



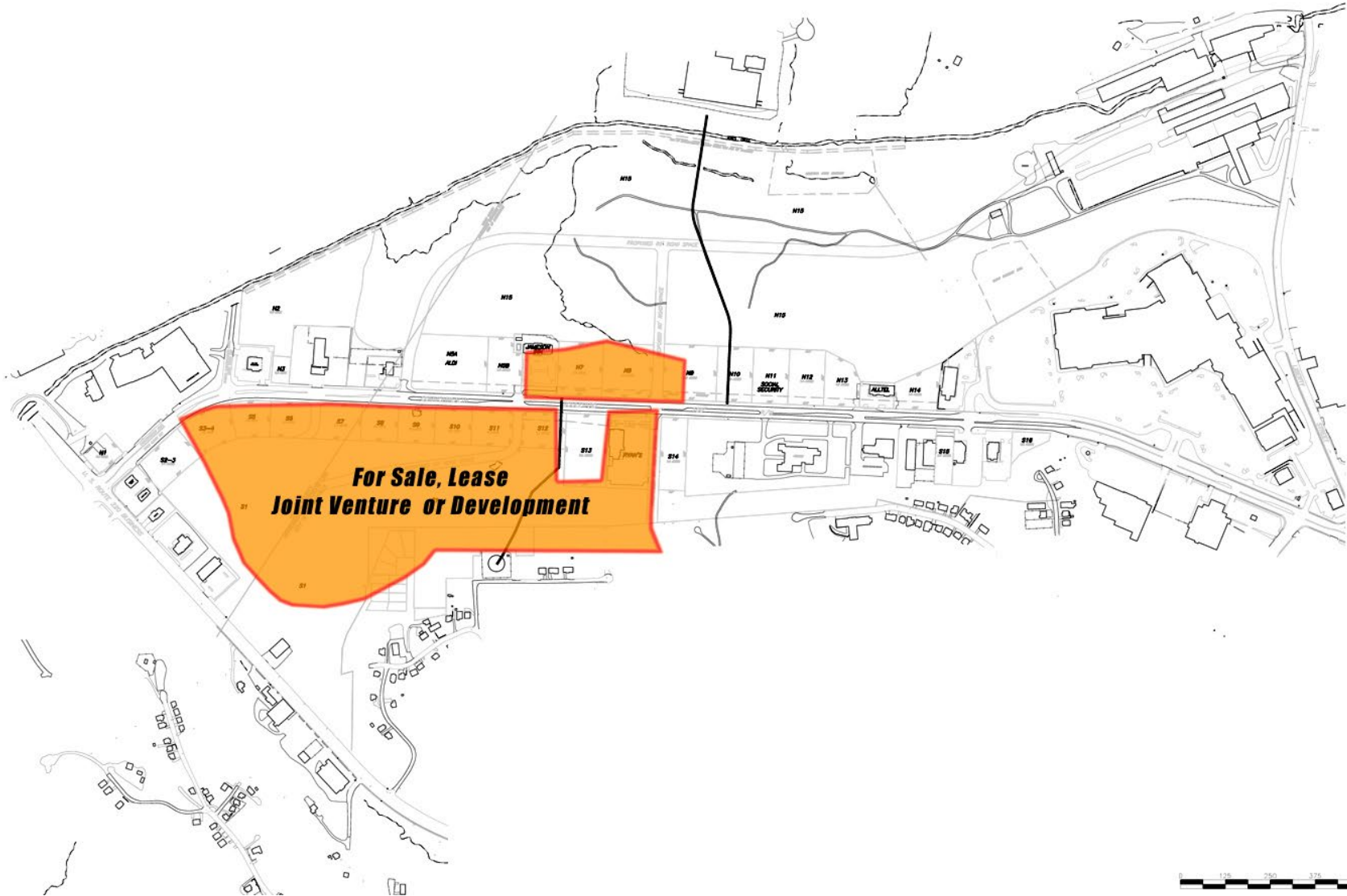
John Jay Schwartz, MCR, RPA  
 phone (804) 740-1555  
 jjschwartz@havesitewilltravel.com  
 www.HaveSiteWillTravel.com



Information contained within is deemed reliable, but is not guaranteed. Subject to prior leasing / sale.

# Martinsville, VA

## Land For Development, Sale, Lease or Joint Venture



John Jay Schwartz, MCR, RPA  
phone (804) 740-1555  
jjschwartz@havesitewilltravel.com  
www.HaveSiteWillTravel.com



Information contained within is deemed reliable, but is not guaranteed. Subject to prior leasing / sale.

# Martinsville, VA

Land For Development, Sale, Lease or Joint Venture



## Demographics Now

A Product of SRC

Date: 11/21/06  
 Current Geography Selection: (3 Selected) 5, 10, 15 mile radii VIRGINIA AVE & COMMONWEALTH BLVD, MARTINSVILLE, VA 24112

Lat: 36.895880 Long: -79.868020  
 City: Villa Heights CDP Pop: 765  
 County: Henry County Pop: 56,013  
 Zip: 24112 Pop: 33,336

### Demographic Snapshot Comparison Report

	5 Miles:	10 Miles:	15 Miles:
<b>Population:</b>			
Total Population	35,269	65,716	91,900
Male Population	47.4%	48.4%	48.5%
Female Population	52.6%	51.6%	51.5%
Median Age	42.1	42.0	41.3
Population Density (per sq. mi.)	449.1	289.2	130.0
Employees	22,025	28,924	31,144
Establishments	2,172	2,860	3,341
<b>Income:</b>			
Median HH Income	\$32,673	\$34,584	\$34,859
Per Capita Income	\$19,335	\$19,414	\$18,833
Average HH Income	\$42,740	\$44,528	\$43,735
<b>Households:</b>			
Total Households	15,176	27,751	38,388
Average Household Size	2.25	2.33	2.36
Household Growth 1990 - 2000	1.8%	5.8%	8.8%
<b>Housing:</b>			
Owner Occupied Housing Units	58.7%	64.7%	66.2%
Renter Occupied Housing Units	29.8%	23.1%	21.3%
Vacant Housing Units	12.4%	12.1%	12.5%
<b>Race:</b>			
White	66.2%	71.2%	74.0%
Black	31.4%	26.4%	23.9%
American Indian, Eskimo, Aleut	0.1%	0.1%	0.1%
Asian	0.7%	0.6%	0.5%
Hawaiian or Pacific Islander	0.1%	0.1%	0.1%
Other	0.9%	0.9%	0.8%
Multirace	0.7%	0.7%	0.6%
<b>Ethnicity:</b>			
Hispanic	5.4%	5.7%	4.9%
Non-Hispanic	94.6%	94.3%	95.2%

Current year data is for the year 2006. 5 year projected data is for the year 2011. More About Our Data.  
 Demographic data © 2006 by Experian/Applied Geographic Solutions.



John Jay Schwartz, MCR, RPA  
 phone (804) 740-1555  
 jjschwartz@havesitewilltravel.com  
 www.HaveSiteWillTravel.com

