

Caroline Trustee Land

Interstate 95 Frontage
Caroline County, Virginia



**Come to the North / South Crossroads for
American Commerce and Truck Transportation**



INVESTMENT HIGHLIGHTS

Investment Property Available in Caroline County
18+/- Acres Available | \$25,000 per acre

Interstate 95 Frontage at Exit 104

Sites available for development for distribution, light manufacturing, commercial and retail uses.

CNBC selects Virginia as the best state for doing business.
<http://www.cnbc.com/id/43381920>



CNBC selects Virginia as the best state for doing business...
<http://www.cnbc.com/id/31763805>



<http://www.visitcaroline.com/economic.html>

	2010 DEMOGRAPHICS		
	1 Mile	3 Miles	5 Miles
Population	5,903	24,549	55,179
Average HH Income	\$74,985	\$78,562	\$78,671
Median HH Income	\$63,039	\$65,277	\$63,581



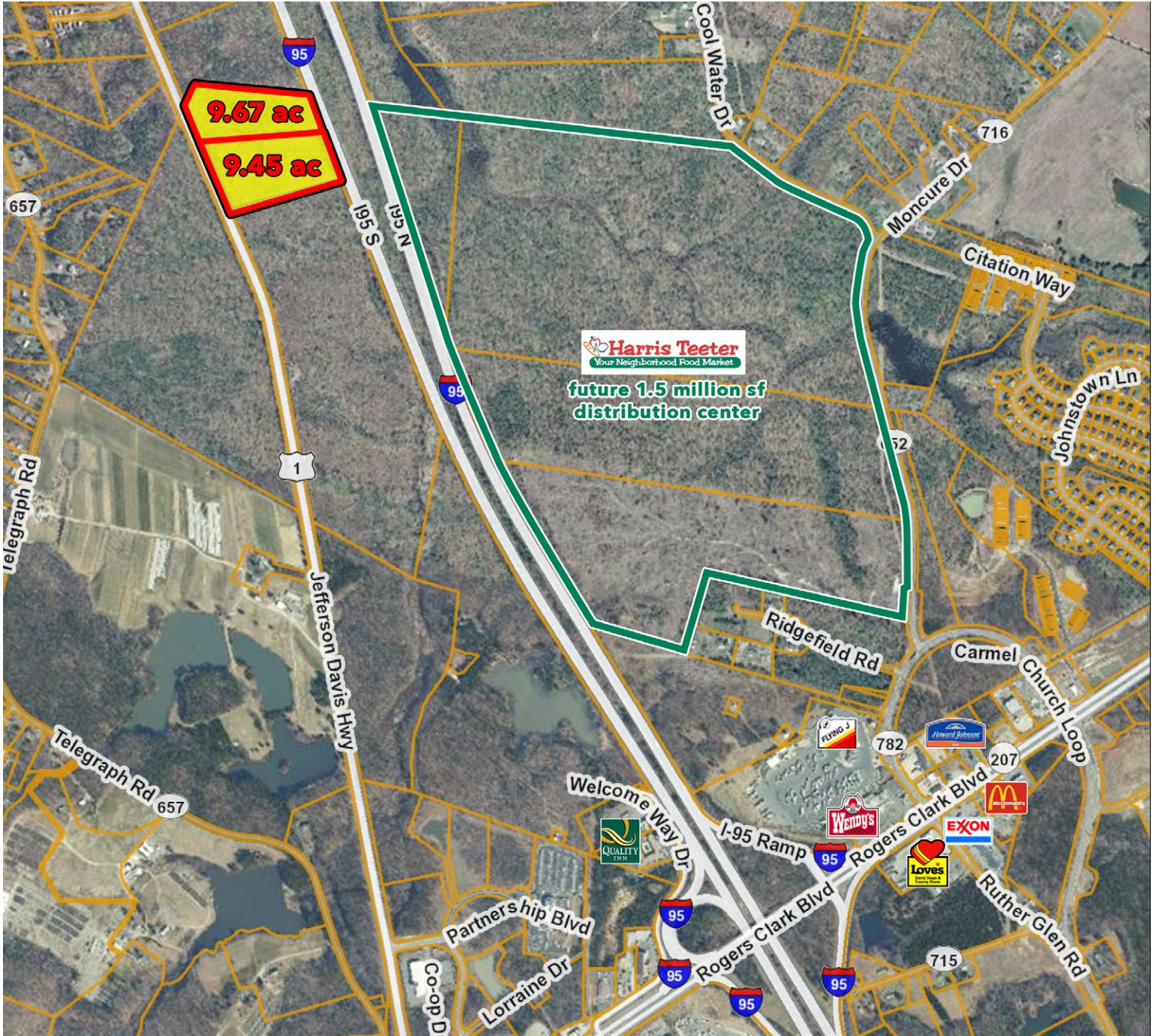
John Jay Schwartz, MCR, RPA
phone (804) 740-1555
jjschwartz@havesitewilltravel.com
www.HaveSiteWillTravel.com

Caroline Trustee Land

Interstate 95 Frontage
Caroline County, Virginia

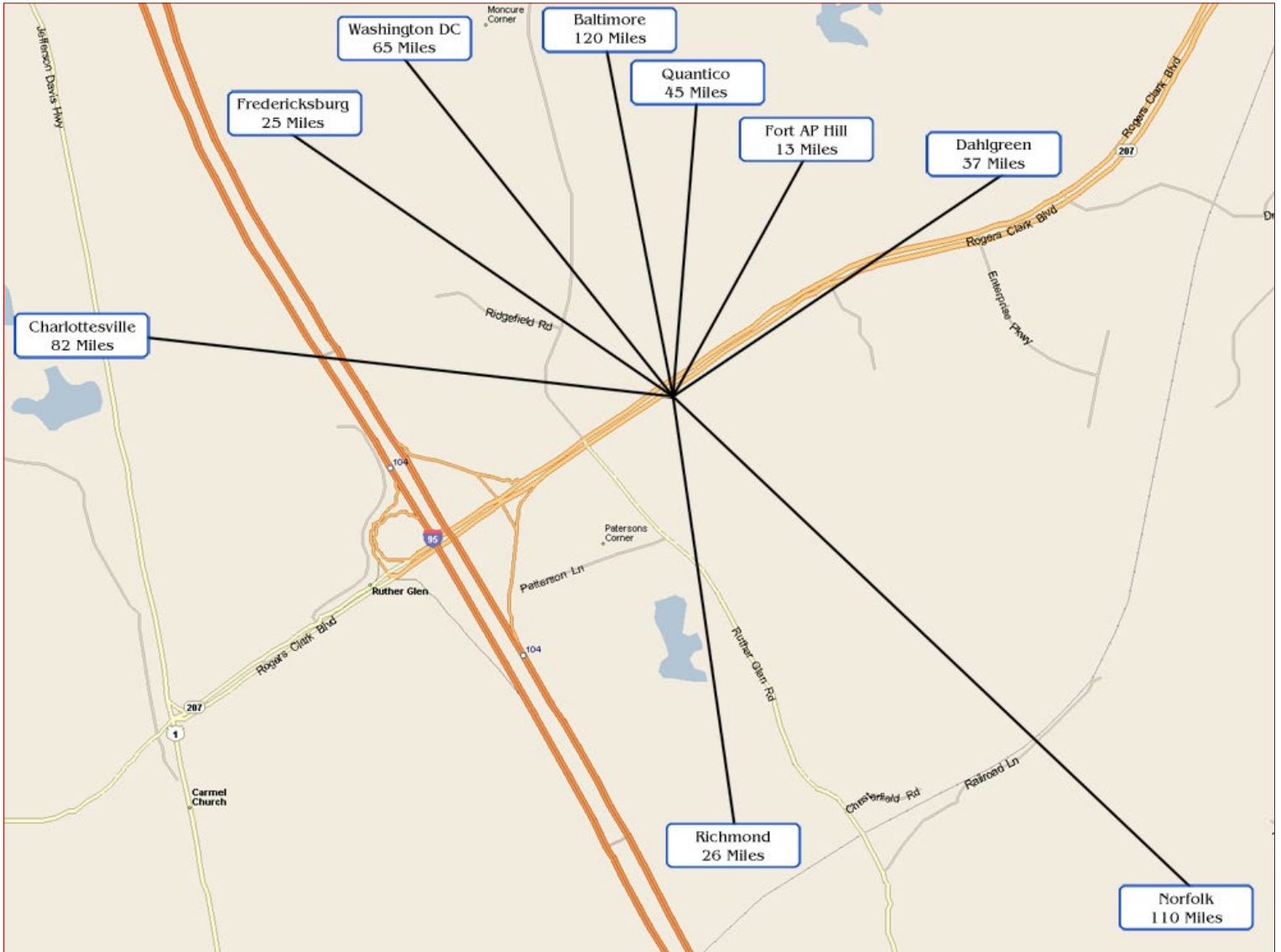


18± Acres



Caroline Trustee Land

Interstate 95 Frontage
Caroline County, Virginia



John Jay Schwartz, MCR, RPA
phone (804) 740-1555
jjschwartz@havesitewilltravel.com
www.HaveSiteWillTravel.com